

# 55N

## NIVERNAIS CLASS DUTCH BARGE

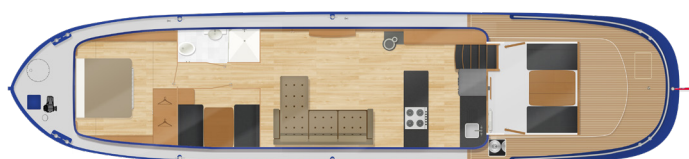
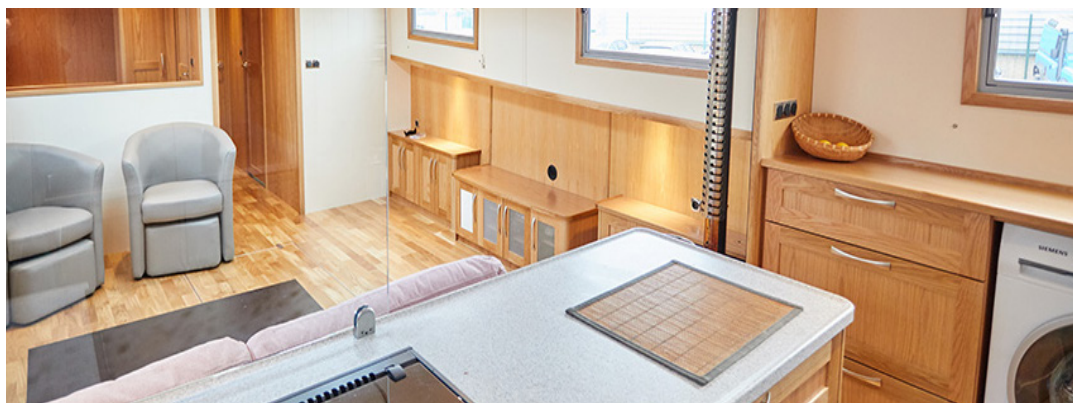
OVERALL LENGTH: 55FT / 16.75M

OVERALL BEAM: 12FT 6IN / 3.8M

AIR DRAFT: 2.85M

GUIDE COST PRICE

£270,000\*



## SPECIFICATION

### HULL

Shipbuilding Quality Grade A steel plate according to EN10204 / 3.2 LRS  
Shipbuilding plate blasted to SA 2.5 and primed by Dutch supplier  
Spray foam insulation  
13mm keel plate  
8mm chines & hull sides  
6mm decks  
5mm superstructure  
1260L water tank with level indicator  
1015L main propulsion fuel tank with level indicator  
750L auxiliary fuel tank with level indicator  
1020L black waste tank with level indicator  
16L grey waste buffer tank with pump (divertible to black tank)

### EXTERIOR

Stainless steel hand rails and bollards  
Jotun approved external marine paint system (choice of colours, specification available on request)  
Double glazed & thermally broke windows to wheelhouse  
Double glazed & thermally broke windows & portholes to cabin  
Automated hardwood mast with powder coated stainless steel tabernacle  
Hardwood double glazed dog box with cover  
Front barge fender  
Navigation lights (port, starboard, stern, anchor, steaming) & headlight  
Basic mooring lines 14mm thick x 15m long  
Flexiteek decking to stern deck

### ENGINE & HEATING

Beta 90hp engine with PRM 280 gearbox keel cooled  
Kabola pressure jet central heating boiler  
75L calorifier  
1kw immersion heater  
Heating via radiators  
ROLLS AGM 2-volt cells in excess of 1150 a/hr (c20 rate)

VETUS AGM batteries for thrusters & engine start  
3kw Mastervolt inverter/charger  
3.5kw Mastervolt isolation transformer  
Mastervolt battery monitoring system  
Twin alternators 12v  
125kgf electric bow thruster  
95kgf electric stern thruster  
Electric anchor winch

### WHEELHOUSE

Fixed steel wheelhouse  
Lined with sapele  
Removable table with drop down leaf converts into a double bed  
Seating for 4 people  
Access to engine room via the steps under the seating

### DASH

Simrad 7" chart plotter with basic mapping  
Simrad VHF Radio DSC  
RPI (Rudder Position Indicator) + Depth Gauge  
Engine panel & controls  
Thruster controls  
Hydraulic steering with bypass

### GALLEY

Fitted with premium oak plywood  
Shaker style hardwood oak doors  
Composite work tops with waterfall edges  
Stainless steel inset sink  
Gas hob and oven with an extractor hood  
Built in microwave  
Vitrifrigo marine fridge freezer 12v  
Slimline Dishwasher (Customer to supply)  
Washer/dryer (Customer to supply)  
Engineered wooden flooring  
Central heating radiator

### SALOON

Under floor storage/cellar  
Engineered wooden flooring  
TV & Audio (Customer to supply)  
Large central heating radiator

### MASTER BEDROOM

King size bed  
Cupboards and drawers to port and starboard  
Full height wardrobe  
TV point  
Central heating radiator  
Engineered wooden flooring or carpet (customer choice)

### SECOND BEDROOM

Sliding privacy hatch into saloon  
Dinette table and seating which converts to a double bed  
Overhead storage and small wardrobe  
Engineered wooden flooring or carpet (customer choice)

### MAIN BATHROOM

800 x 800 shower enclosure  
Thermostatic shower valve  
Marine remote flush toilet  
Vanity unit with integrated basin  
Heated towel radiator

*Optional collapsible hardwood wheelhouse*  
*Refleks 2000KT diesel stove available at extra cost*  
*5kW soundproof enclosed marine generator available at extra cost*  
*Marine aircon unit to bedroom available at extra cost*

\*Price is subject to the year in which the barge is to be constructed.