

65L

LUXEMOTOR CLASS DUTCH BARGE

OVERALL LENGTH: 65FT 6IN / 19.8M

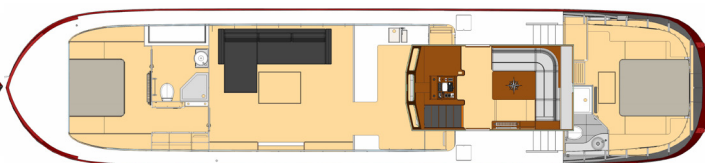
OVERALL BEAM: 14FT 9IN / 4.5M

AIR DRAFT: 3M

DRY WEIGHT: 39 TONNE

GUIDE COST PRICE

£550,000*



SPECIFICATION

HULL

- Shipbuilding Quality Grade A steel plate according to EN10204 / 3.2 LRS
- Shipbuilding plate blasted to SA 2.5 and primed by Dutch supplier
- Spray foam insulation
- 12mm keel plate
- 8mm chines & hull sides
- 6mm decks
- 5mm superstructure
- 1870L water tank with level indicator
- 1240L main propulsion fuel tank with level indicator
- 1150L auxiliary fuel tank with level indicator
- 875L black waste tank with level indicator
- 16L grey waste buffer tank with pump (divertible to black tank)

EXTERIOR

- Stainless steel hand rails and bollards
- Jotun approved external marine paint system (choice of colours, specification available on request)
- Double glazed & thermally broke windows to wheelhouse
- Double glazed & thermally broke portholes to cabin
- Automated hardwood mast with powder coated stainless steel tabernacle
- Welded steel dog box with hardwood lining & canvas cover
- Front barge fender
- Navigation lights (port, starboard, stern, anchor, steaming) & headlight
- Basic mooring lines 14mm thick x 15m long
- Secondary helm position

ENGINE, GENERATOR & HEATING

- Vetus 140hp engine with ZF45 gearbox raw water cooled
- Kabola pressure jet central heating boiler
- 75L calorifier
- 1.5kw immersion heater
- Heating via radiators
- 7kVA soundproof enclosed marine generator
- ROLLS AGM 2-volt cells in excess of 1150 a/hr (c20 rate)
- VETUS AGM batteries for thrusters & engine start
- 3kW Victron Quattro inverter/charger
- Victron Isolation Transformer 3.6kW
- Victron Battery and Remote Management system with touchscreen panel

- Twin alternators 12v
- 210kg.f proportional electric bow thruster
- 150kg.f proportional electric stern thruster
- Electric Anchor Winch
- Electro-hydraulic power steering

WHEELHOUSE

- Fixed steel wheelhouse
- Lined with sapele
- Removable table with drop down leaf converts into a double bed
- Seating for 6 people
- Access to engine room via passageway under wheelhouse

UPPER HELM

- RPI (Rudder Position Indicator) + Depth Gauge
- Engine panel & controls
- Joystick proportional thruster controls
- Raymarine 7" chart plotter with basic mapping
- Power steering

DASH

- Raymarine 7" chart plotter with basic mapping
- Raymarine VHF Radio DSC
- RPI (Rudder Position Indicator) + Depth Gauge
- Engine panel & controls
- Joystick proportional thruster controls

GALLEY

- Fitted with premium oak plywood
- Shaker style hardwood oak doors
- Composite work tops with waterfall edges
- Stainless steel inset sink
- Gas hob and oven with an extractor hood
- Built in microwave
- Vitrefrigo marine fridge freezer 12v
- Slimline Dishwasher (Customer to supply)
- Washer/dryer (Customer to supply)
- Engineered wooden flooring
- Central heating radiator

SALOON

- Under floor storage/cellar
- Engineered wooden flooring
- Refleks 2000KT diesel stove
- TV & Audio (Customer to supply)
- Large central heating radiator

MASTER BEDROOM

- European King size bed
- Cupboards and drawers to port and starboard
- Full height wardrobe
- Marine Aircon
- TV point
- Central heating radiator
- Engineered wooden flooring or carpet (customer choice)

SECOND BEDROOM

- European King size bed
- Full height wardrobe
- Cupboards and drawers to port and starboard
- Marine Aircon
- TV point
- Central heating radiator
- Engineered wooden flooring or carpet (customer choice)

ENSUITE TO MASTER BEDROOM

- Large shower enclosure
- Thermostatic shower valve
- Marine remote flush toilet
- Heated towel radiator
- Vanity unit with integrated basin & waterfall edging

ENSUITE TO SECOND BEDROOM

- Walk in shower with glass screen
- Thermostatic shower valve
- Marine remote flush toilet
- Heated towel radiator
- Vanity unit with integrated basin & waterfall edging

DAY LOO

- Day loo applicable to certain layouts only
- Marine remote flush toilet
- Heated towel radiator
- Washbasin

*Price is subject to the year in which the barge is to be constructed and based on Piper's annual price list.

** Piper Boats reserve the right to alter the specification as required (E&OE).

*** Piper barges are supplied at 0% VAT in the UK as defined in VAT NOTICE 744C